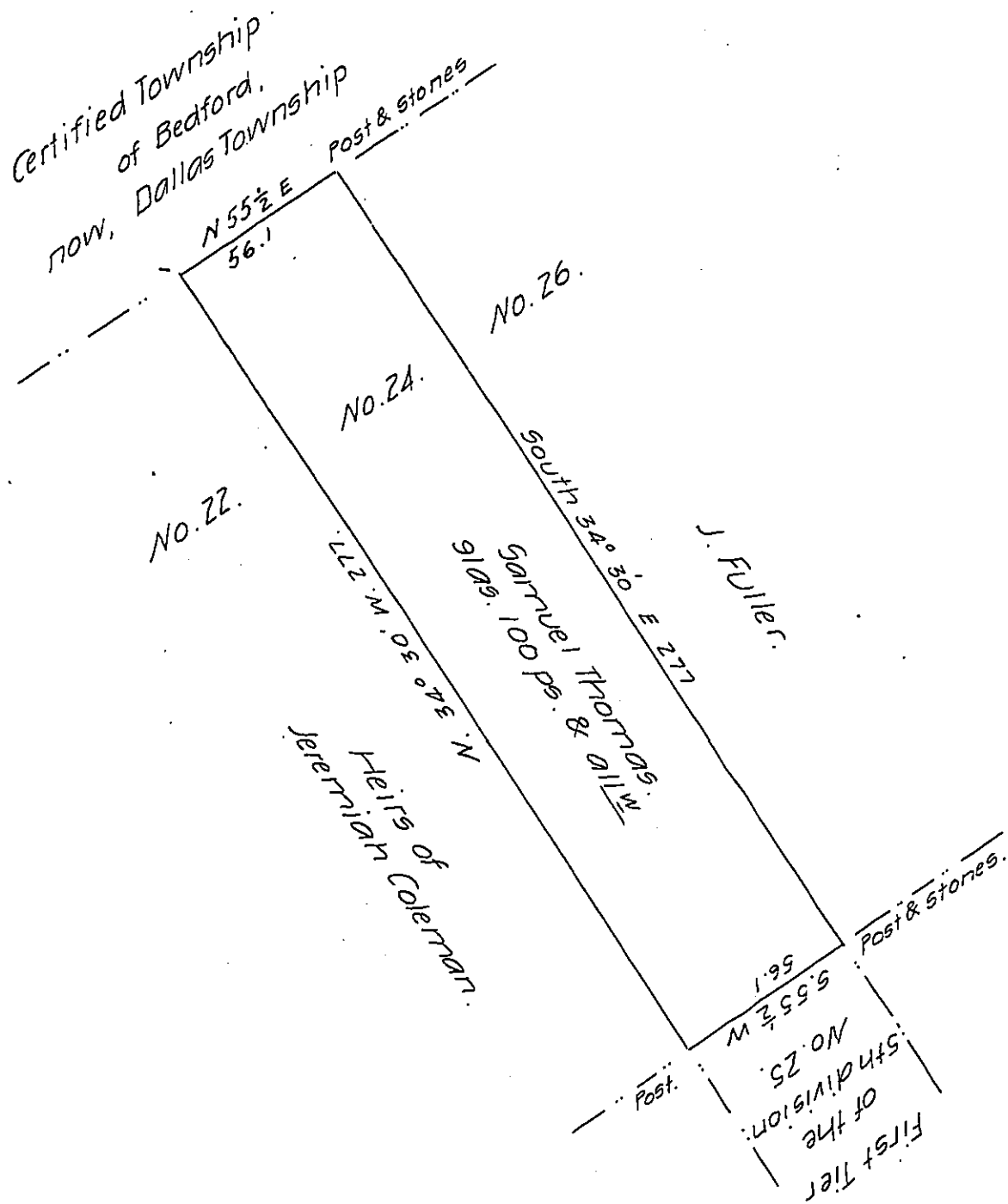


FORM No. 1.



Draught of a tract of land Situate in Plymouth one of the 17 Townships, in Luzerne County, being lot numbered twenty four in the Second Tier of the fifth division of said Township, Containing ninety one acres and one hundred perches of land and the usual allowance & Cr. Surveyed the above described tract of land for Samuel Thomas the 8th day of June A.D. 1827. By Virtue of his Warrant dated the 19th day of January A.D. 1822.

John Bennet D.S.

To Gab! Hiester Esquire
Survr. Genl

IN TESTIMONY that the above is a copy of the original remaining on file in the Department of Internal Affairs of Pennsylvania, made conformably to an Act of Assembly approved the 16th day of February 1833, I have hereunto set my hand and caused the Seal of said Department to be affixed at Harrisburg, this twenty-sixth day of March 1907

Loacn, Brown
Secretary of Internal Affairs.